

# 1835 VILLAGE

— A MASTER-PLANNED COMMUNITY —

## OAKMONT

3 Bedroom / 3 Bathroom / 2 Car Garage  
1,586 sq.ft.



9300 Vera Cruz, Austin, Texas 78737 | 830-468-4949 | [AvexHomesTX.com](http://AvexHomesTX.com)

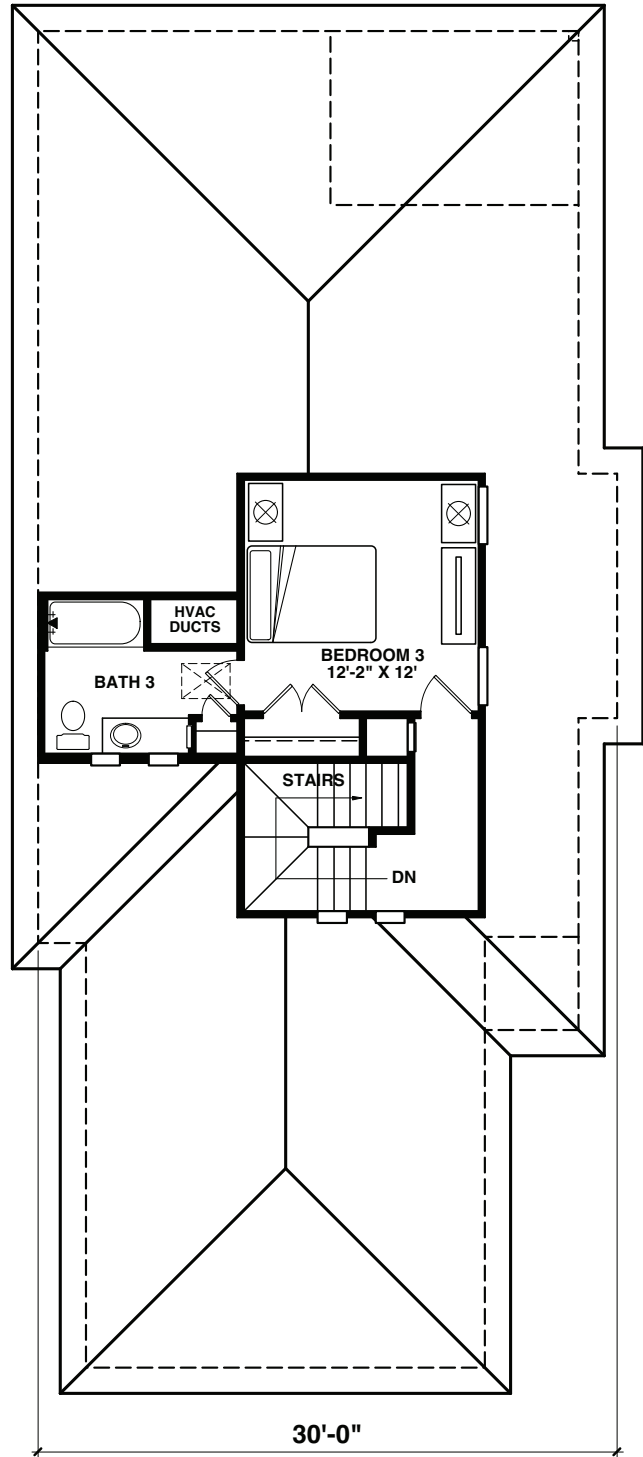
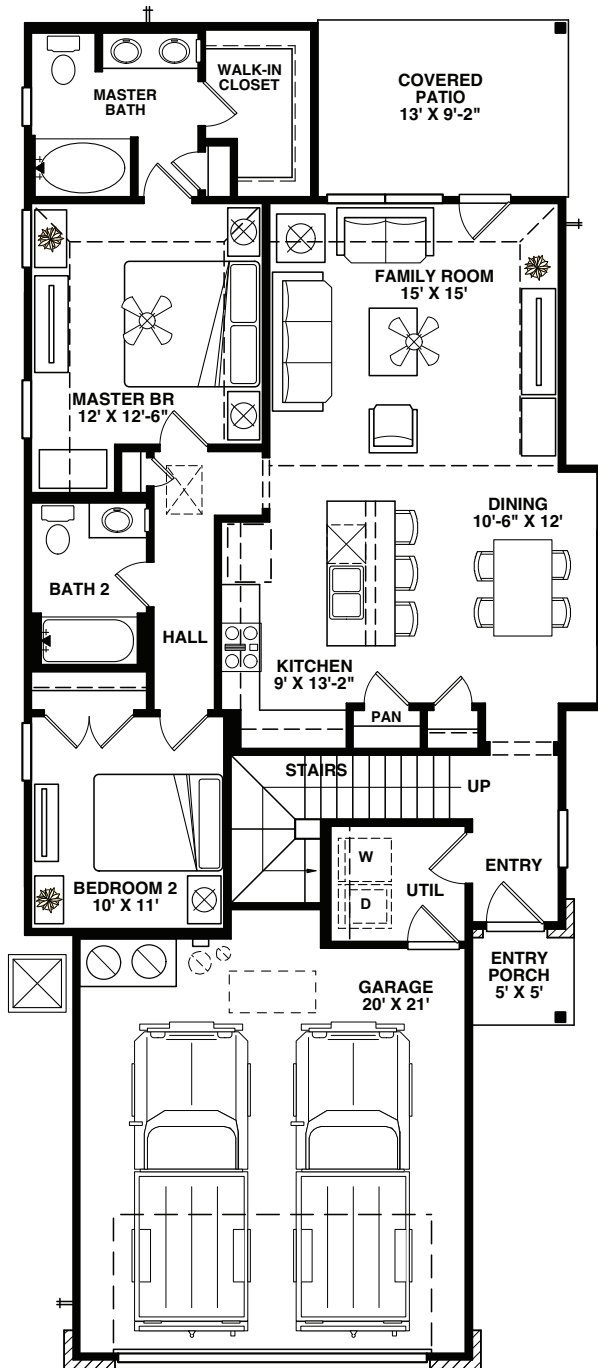
Prices, terms, provisions, colors, specifications, materials, square footages, included features, available options and elevations are subject to change without notice. All dimensions and square footages are approximate and may vary in construction and method of calculation. Prices shown refer to the base house and do not include any optional features, upgrades, or lot premiums. Renderings are artistic conceptions and may show certain upgrade features. Plans are the copyright property of Avex Homes Texas LLC©

# 1835 VILLAGE

A MASTER-PLANNED COMMUNITY

# OAKMONT

1,586 SQUARE FEET



Prices, terms, provisions, colors, specifications, materials, square footages, included features, available options and elevations are subject to change without notice. All dimensions and square footages are approximate and may vary in construction and method of calculation. Prices shown refer to the base house and do not include any optional features, upgrades, or lot premiums. Renderings are artistic conceptions and may show certain upgrade features. Plans are the copyright property of Avex Homes Texas LLC©