



*The* **VILLAGES**  
*at*  
**RIVER BEND**  
MASTER-PLANNED COMMUNITY

## SILVERADO GL

3 Bedroom / 2.5 Bathroom / Study / 2 Car Garage  
2,069 sq. ft.



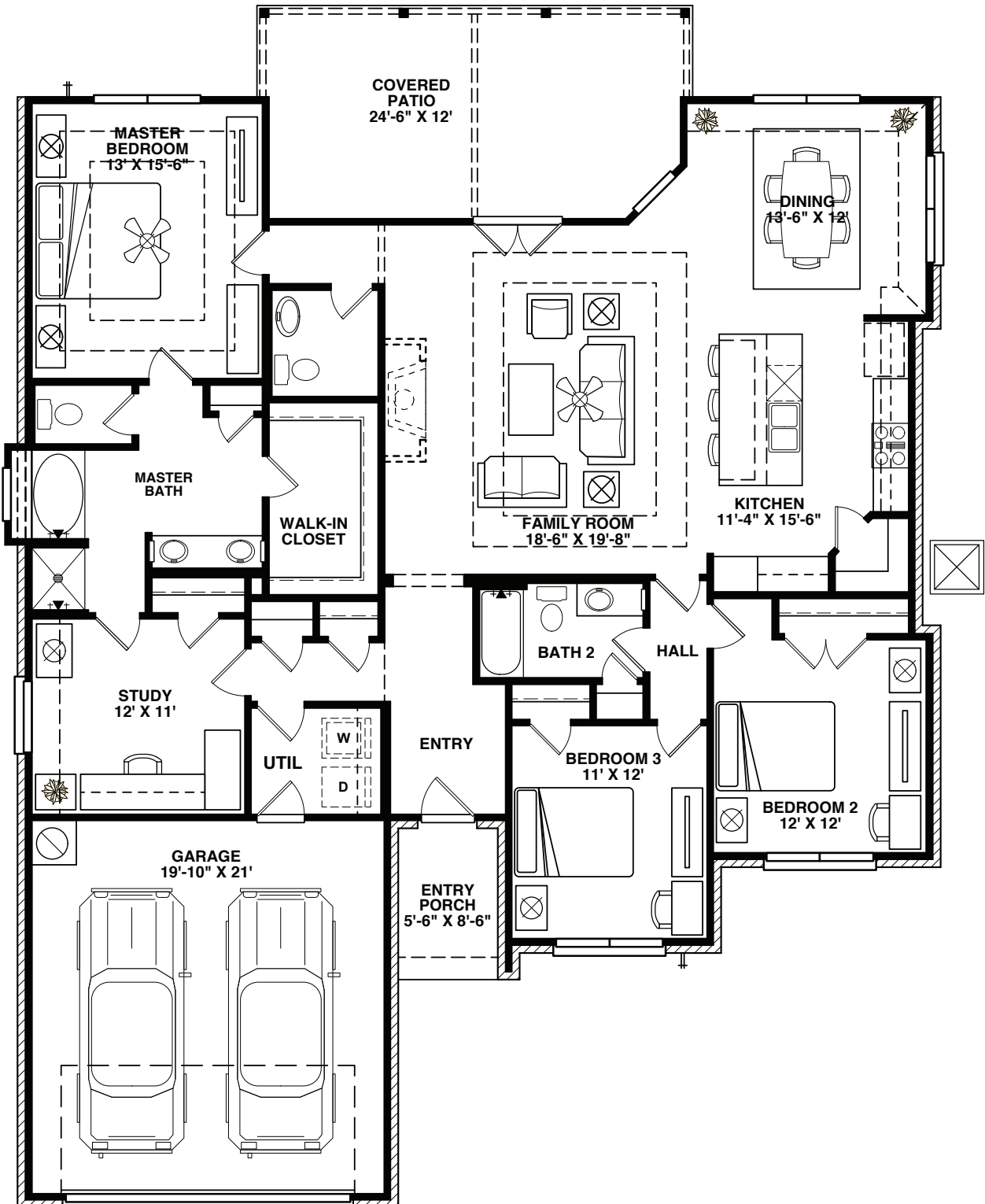
9300 Vera Cruz, Austin, Texas 78737 | 830-468-4949 | [AvexHomesTX.com](http://AvexHomesTX.com)

Prices, terms, provisions, colors, specifications, materials, square footages, included features, available options and elevations are subject to change without notice. All dimensions and square footages are approximate and may vary in construction and method of calculation. Prices shown refer to the base house and do not include any optional features, upgrades, or lot premiums. Renderings are artistic conceptions and may show certain upgrade features. Plans are the copyright property of Avex Homes Texas LLC©



The **VILLAGES**  
at  
**RIVER BEND**  
MASTER-PLANNED COMMUNITY

**SILVERADO**  
2,069 SQUARE FEET

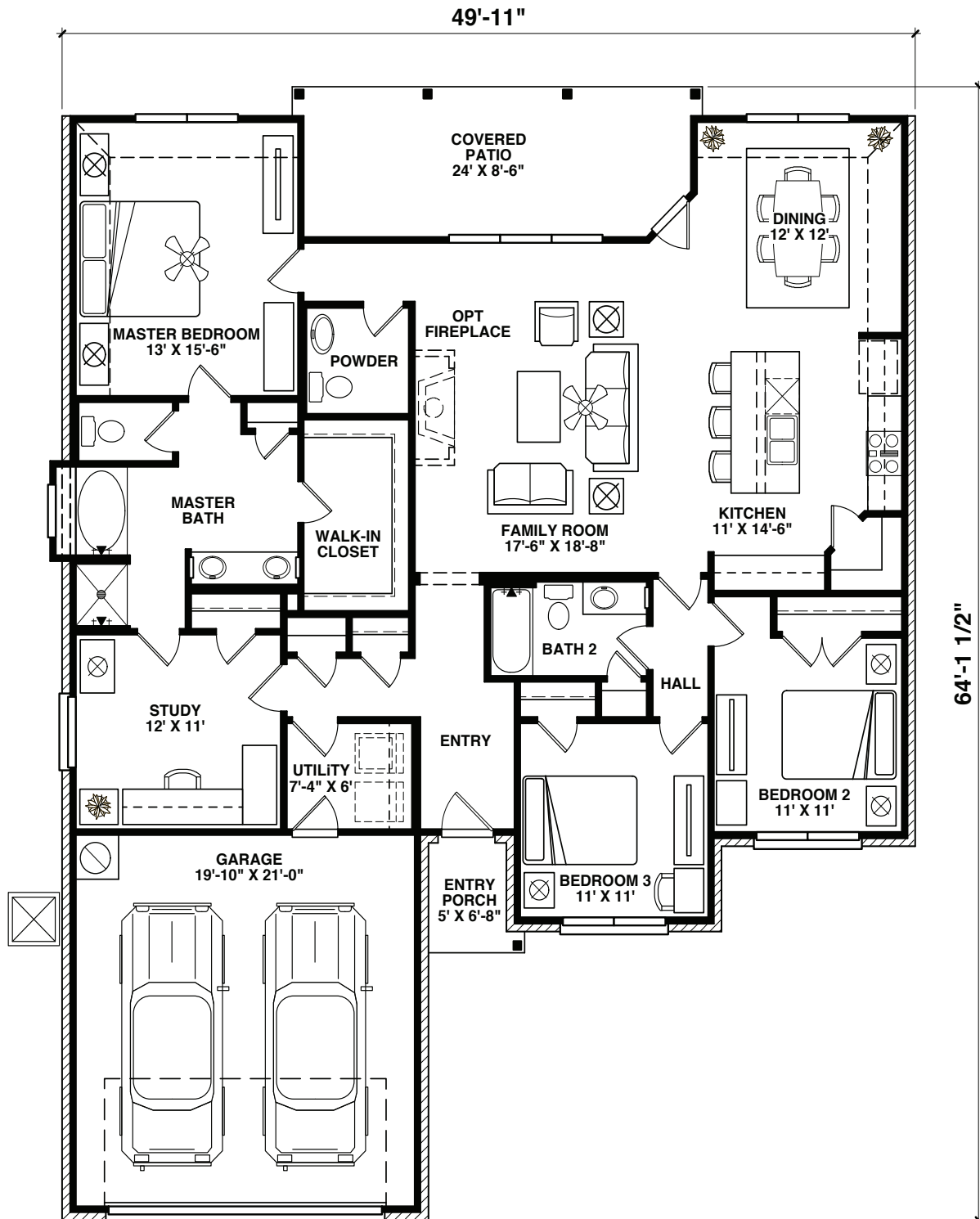


Prices, terms, provisions, colors, specifications, materials, square footages, included features, available options and elevations are subject to change without notice. All dimensions and square footages are approximate and may vary in construction and method of calculation. Prices shown refer to the base house and do not include any optional features, upgrades, or lot premiums. Renderings are artistic conceptions and may show certain upgrade features. Plans are the copyright property of Avex Homes Texas LLC©



The **VILLAGES**  
at  
**RIVER BEND**  
MASTER-PLANNED COMMUNITY

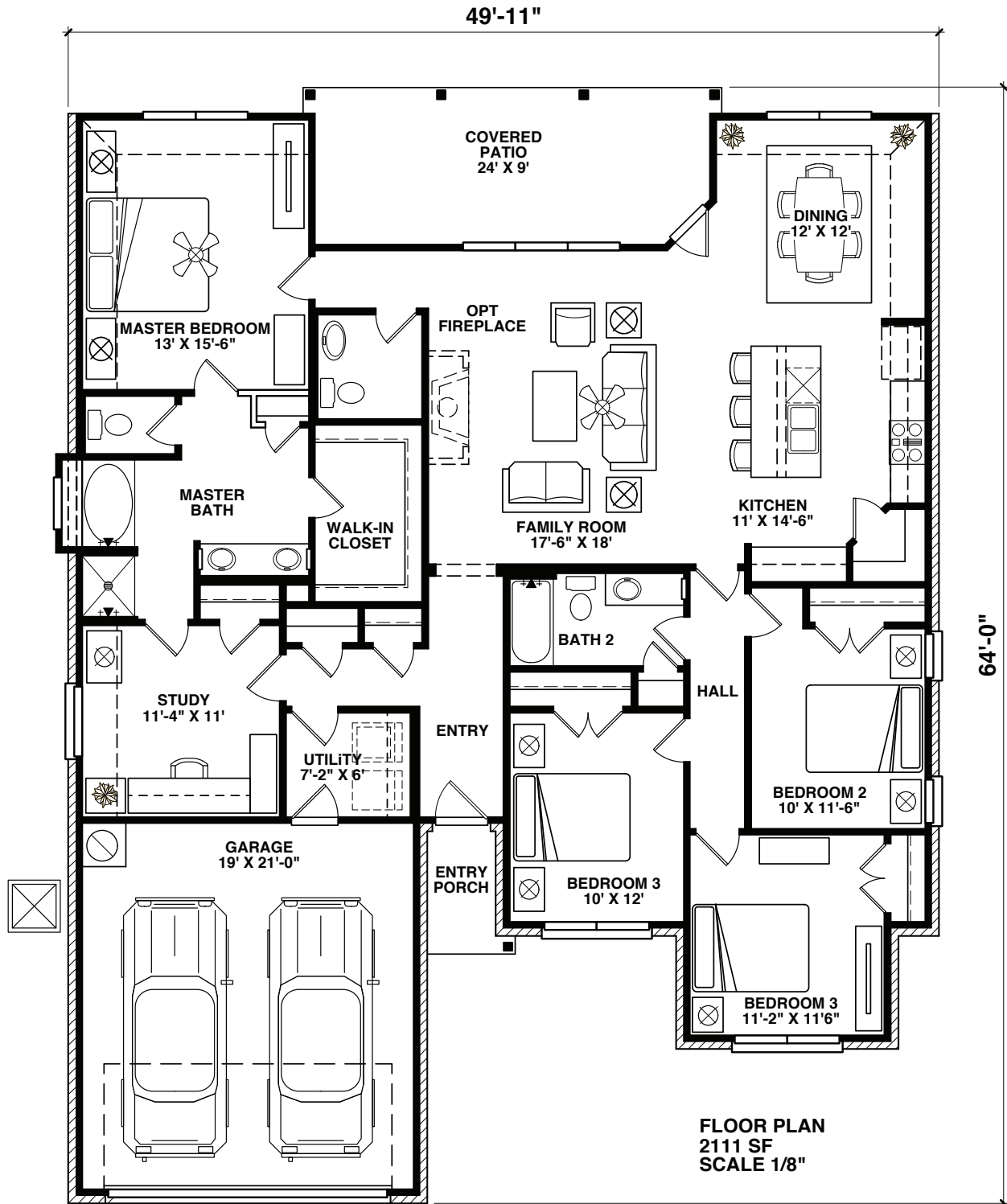
**SILVERADO**  
1,955 SQUARE FEET





The **VILLAGES**  
at  
**RIVER BEND**  
MASTER-PLANNED COMMUNITY

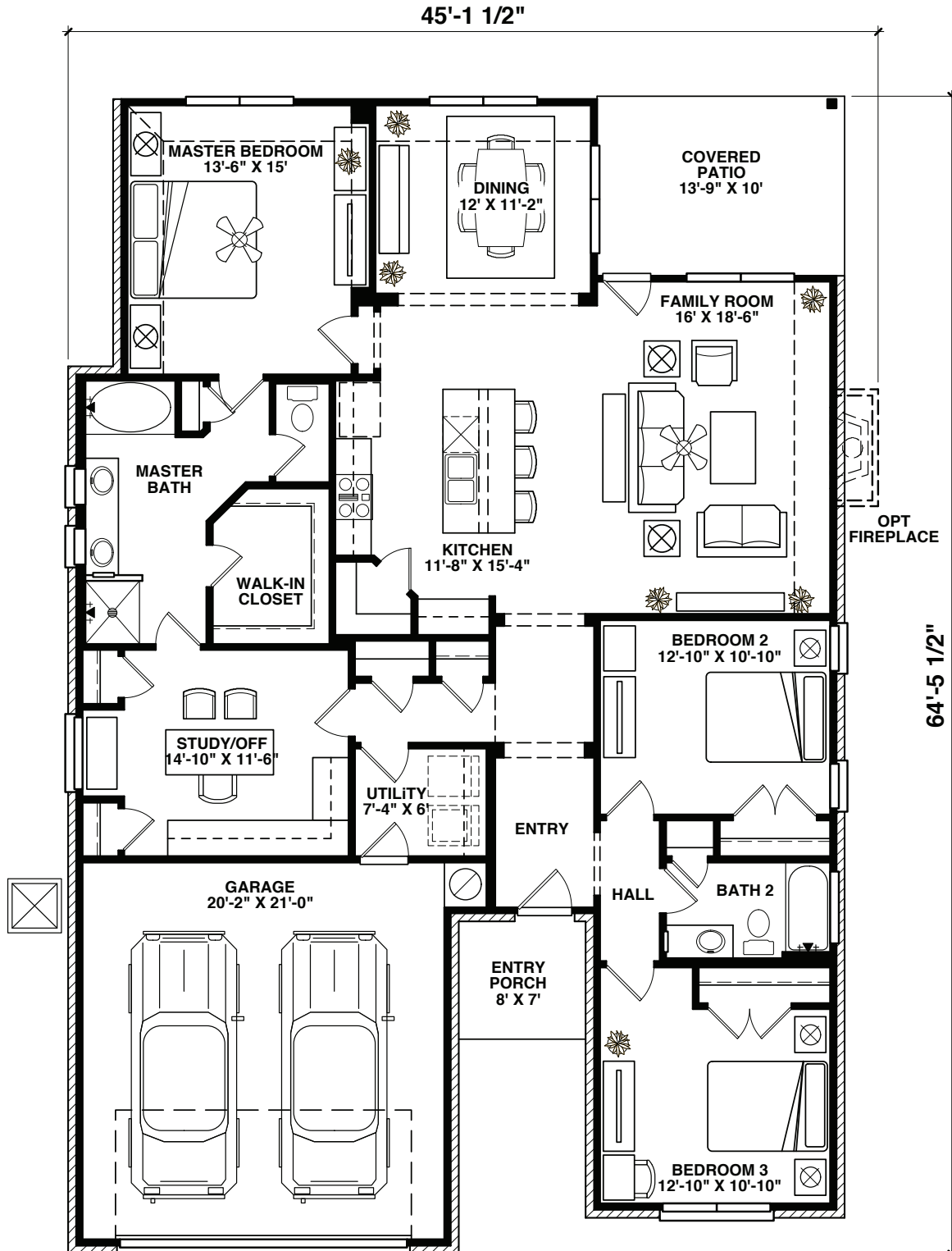
**SILVERADO**  
2,111 SQUARE FEET





The **VILLAGES**  
*at*  
**RIVER BEND**  
MASTER-PLANNED COMMUNITY

**SILVERADO**  
1,967 SQUARE FEET

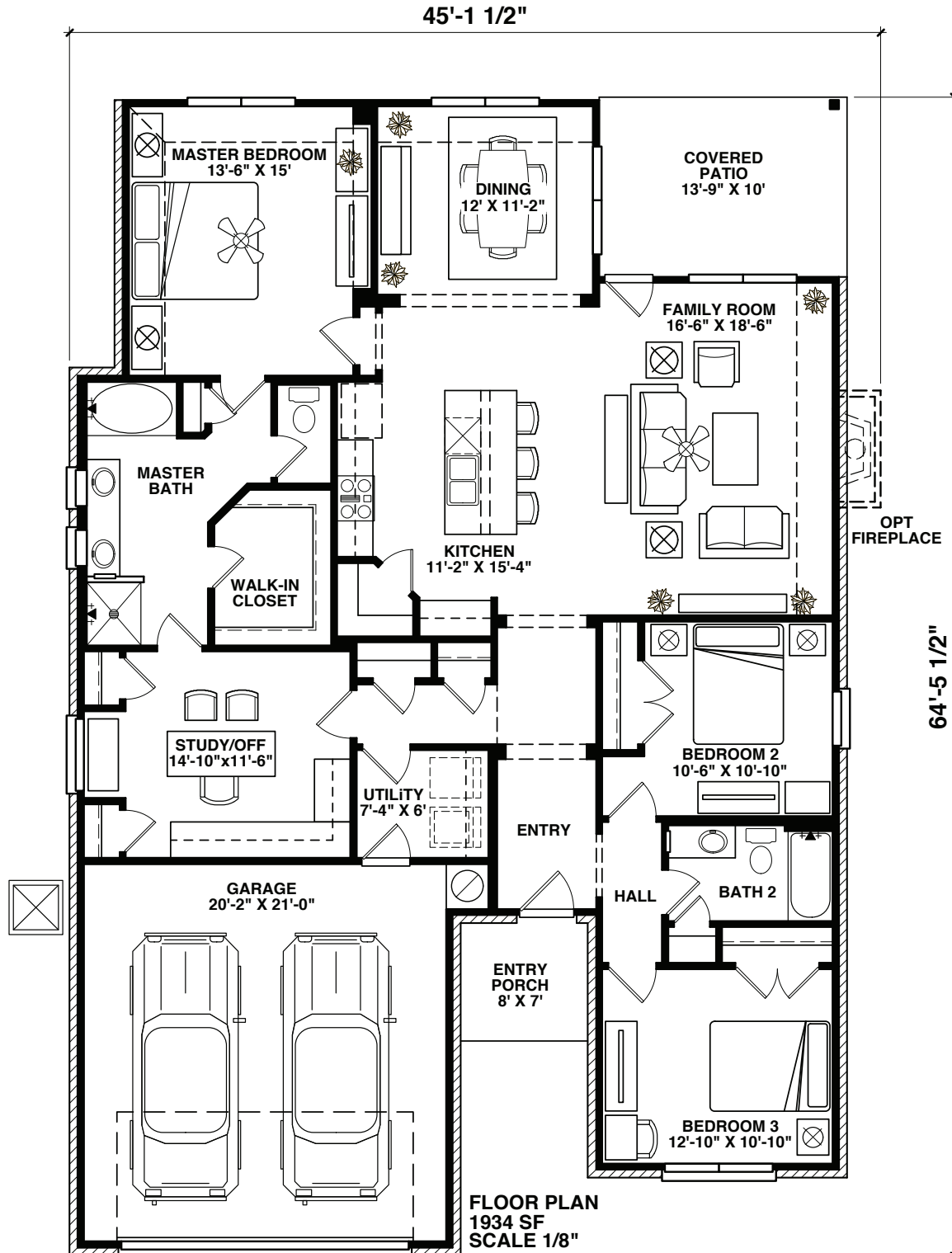


Prices, terms, provisions, colors, specifications, materials, square footages, included features, available options and elevations are subject to change without notice. All dimensions and square footages are approximate and may vary in construction and method of calculation. Prices shown refer to the base house and do not include any optional features, upgrades, or lot premiums. Renderings are artistic conceptions and may show certain upgrade features. Plans are the copyright property of Avex Homes Texas LLC©



The **VILLAGES**  
at  
**RIVER BEND**  
MASTER-PLANNED COMMUNITY

**SILVERADO**  
1,934 SQUARE FEET



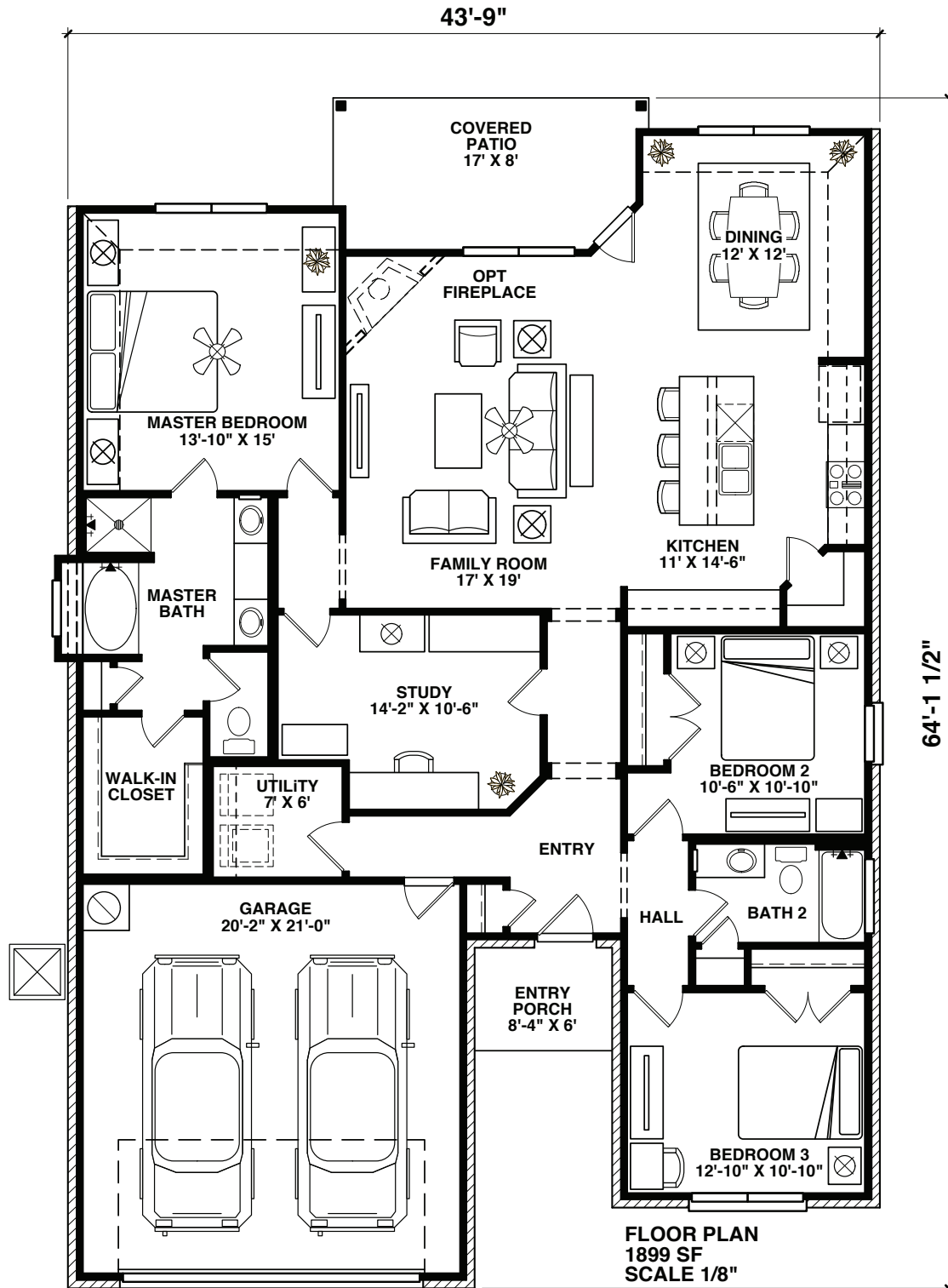
Prices, terms, provisions, colors, specifications, materials, square footages, included features, available options and elevations are subject to change without notice. All dimensions and square footages are approximate and may vary in construction and method of calculation. Prices shown refer to the base house and do not include any optional features, upgrades, or lot premiums. Renderings are artistic conceptions and may show certain upgrade features. Plans are the copyright property of Avex Homes Texas LLC©





The **VILLAGES**  
at  
**RIVER BEND**  
MASTER-PLANNED COMMUNITY

**SILVERADO**  
1,899 SQUARE FEET



Prices, terms, provisions, colors, specifications, materials, square footages, included features, available options and elevations are subject to change without notice. All dimensions and square footages are approximate and may vary in construction and method of calculation. Prices shown refer to the base house and do not include any optional features, upgrades, or lot premiums. Renderings are artistic conceptions and may show certain upgrade features. Plans are the copyright property of Avex Homes Texas LLC©



The **VILLAGES**  
*at*  
**RIVER BEND**  
MASTER-PLANNED COMMUNITY

**SILVERADO**  
1,864 SQUARE FEET

