



The **VILLAGES**
at
RIVER BEND
MASTER-PLANNED COMMUNITY

SAN JOSE

3 Bedroom / 2 Bathroom / 2 Single Car Garages / 2 Story
2,218 sq. ft. / Open Living Area includes: Kitchen, Dining, Breakfast & Family Room



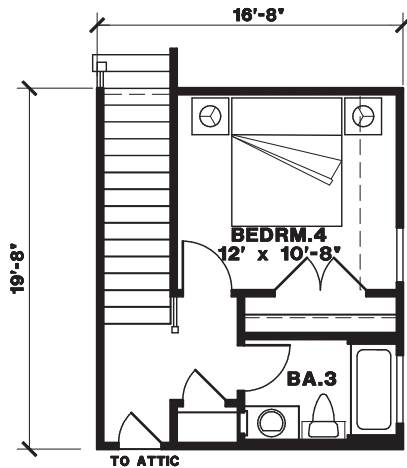
9300 Vera Cruz, Austin, Texas 78737 | (830) 468 4949 | RiverBendVillages.com

Prices, terms, provisions, colors, specifications, materials, square footages, included features, available options and elevations are subject to change without notice. All dimensions and square footages are approximate and may vary in construction and method of calculation. Prices shown refer to the base house and do not include any optional features, upgrades, or lot premiums. Renderings are artistic conceptions and may show certain upgrade features. Plans are the copyright property of Avex Homes Texas LLC©

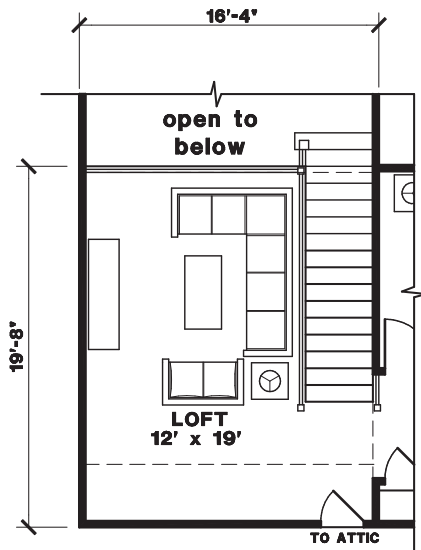


The **VILLAGES**
at
RIVER BEND
MASTER-PLANNED COMMUNITY

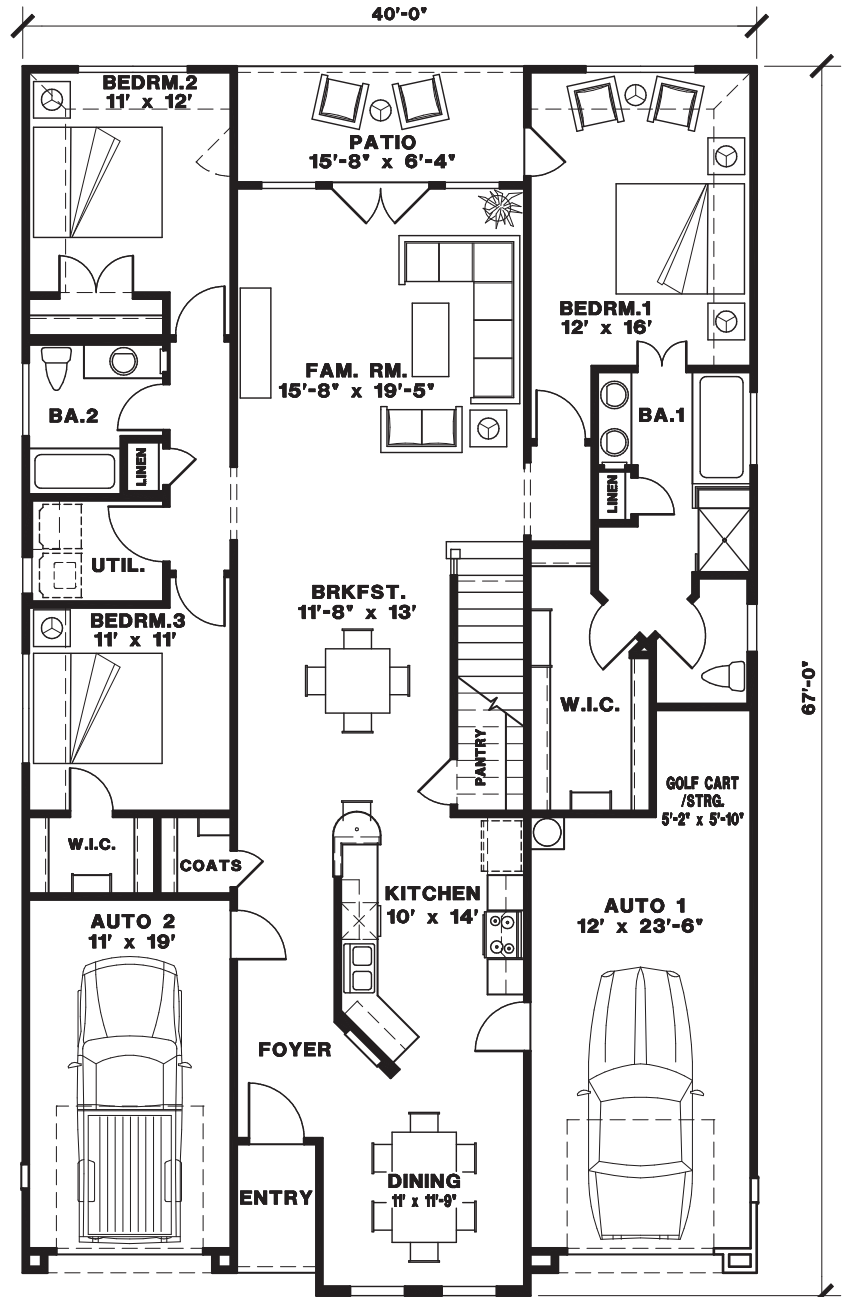
SAN JOSE
2,218 SQUARE FEET



2ND FLOOR PLAN
274 S.F.



2ND FLR. LOFT OPTION
268 S.F.



1ST FLOOR PLAN